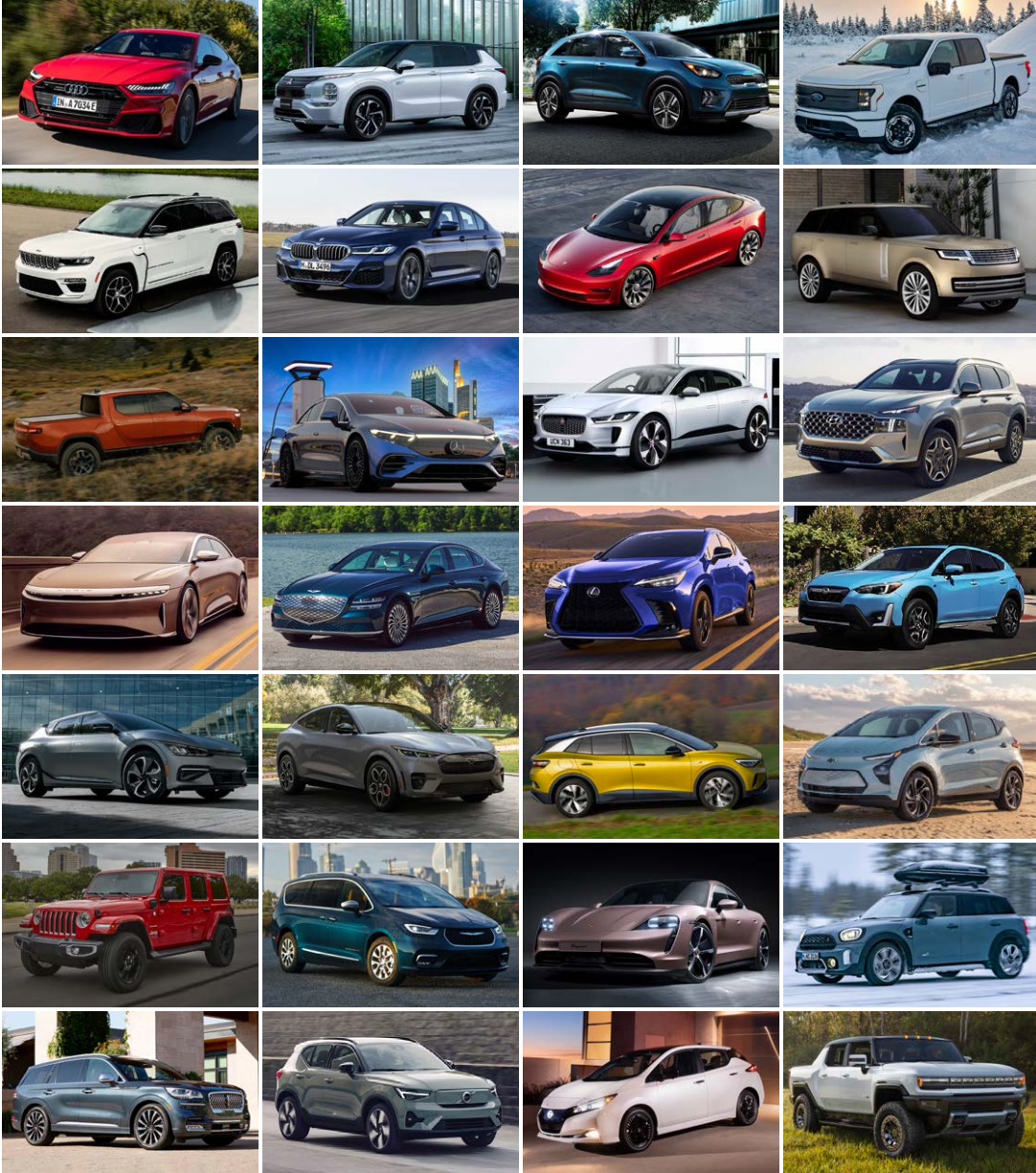


EPRI

# CONSUMER GUIDE TO ELECTRIC VEHICLES



AUGUST 2022



# WHY BUY AN ELECTRIC CAR?

**Electric vehicles (EVs) are fun to drive, safe, comfortable, and convenient to refuel.**

They also cost less to operate per mile and produce no tailpipe emissions.

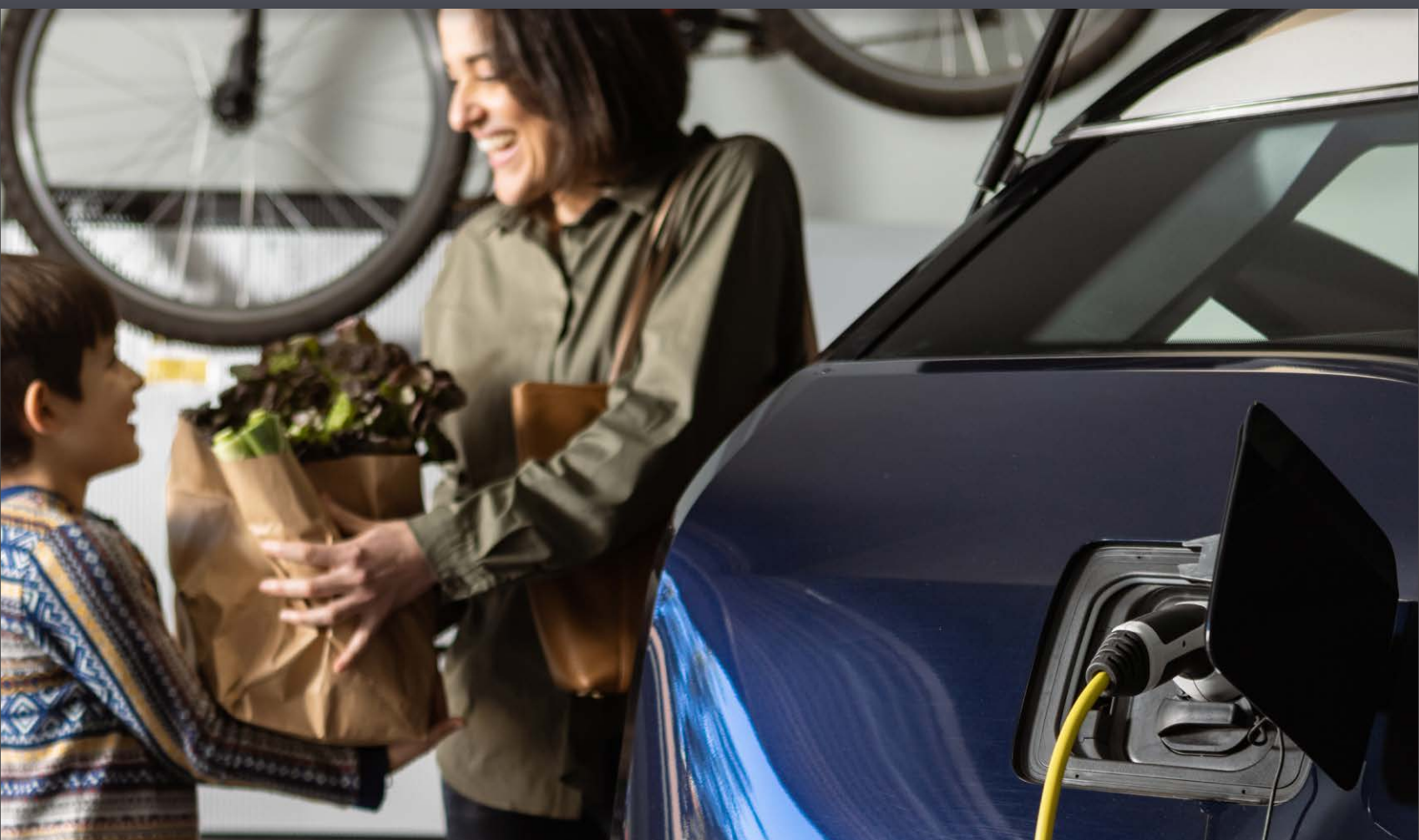
Today's electric cars do everything a gas car can do—and more. Most are high-performing vehicles with silent, instant torque, superb handling, and the latest technology and safety features. Most can travel 200–250 miles on a charge; many can go farther.

Although most EV drivers prefer to charge at home for its convenience and savings, a growing national network of public charging sites enables more consumers—even those who can't plug in at home—to consider purchasing an EV.

Because EVs are powered by electricity instead of gasoline, they shift our energy reliance to domestic sources while also reducing emissions. Cutting vehicle emissions is especially critical in communities adjacent to heavily trafficked roadways. As local power generation grows cleaner, every electric car charged on that grid gets cleaner too—and the broader public health and climate benefits grow. Electrifying light-duty transport would reduce overall greenhouse gas emissions by 17% relative to 2018 levels, according to U.S. EPA.





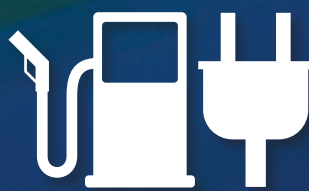


## EV 101

This guide highlights the two types of EVs that plug into the grid to recharge their batteries. They are battery-electric (or all-electric) vehicles and plug-in hybrids (or PHEVs).



**All-electric vehicles** are powered solely by an electric motor and battery. They burn no gasoline or diesel fuel, so they have no tailpipe and no emissions. Battery technology is rapidly advancing, vehicle costs are declining, and range between charges is increasing.



**Plug-in hybrids** pair an electric motor and battery with an internal-combustion engine. Plug-in hybrids drive on electricity until the battery is mostly empty. Then the engine turns on, and the car drives like a conventional hybrid.

**Conventional hybrids**, sometimes called “electrified vehicles,” refuel only with gasoline. Because they do not plug in, they are not included in this guide.



# AVAILABLE NOW

## BATTERY-ELECTRIC VEHICLE

MODEL NAME	RANGE (MILES)	WHERE	PAGE
<b>SUV/CROSSOVER</b>			
Audi e-tron	222	Nationwide	7
Audi e-tron Sportback	218	Nationwide	7
Audi Q4 e-tron quattro	241	Nationwide	8
Audi Q4 Sportback e-tron quattro	241	Nationwide	8
BMW iX	274–324	Nationwide	8
Ford Mustang Mach-E AWD	224–277	Select Markets	8
Genesis Electrified G80	323	Select Markets	9
Hyundai Ioniq 5	220–303	Select Markets	9
Jaguar I-Pace	234	Nationwide	9
Kia EV6	232–310	Nationwide	9
Rivian R1S	316	Nationwide	10
Tesla Model X	340–360	Nationwide	10
Tesla Model Y	303–326	Nationwide	10
Volkswagen ID.4	245–275	Nationwide	10
Volvo C40 Recharge	226	Nationwide	11
Volvo XC40 Recharge	208	Nationwide	11
<b>COMPACT/HATCHBACK</b>			
Chevrolet Bolt EUV	247	Nationwide	12
Chevrolet Bolt EV	259	Nationwide	12
Hyundai Kona Electric	258	Select Markets	12
Kia Niro EV	239	Select Markets	12
Mazda MX-30	100	Select Markets	13
Mini Cooper SE	114	Nationwide	13
Nissan Leaf	149–226	Nationwide	13
<b>SEDAN</b>			
Audi e-tron GT	232–238	Nationwide	14
BMW i4	227–282	Nationwide	14
Mercedes-Benz EQS	350	Nationwide	14
Polestar 2	249–260	Nationwide	14
Tesla Model 3	263–353	Nationwide	15
Tesla Model S	390–520	Nationwide	15



# AVAILABLE NOW

## BATTERY-ELECTRIC VEHICLE

MODEL NAME	RANGE (MILES)	WHERE	PAGE
<b>MINIVAN/WAGON/VAN</b>			
Porsche Taycan 4 Cross Turismo	215	Nationwide	15
<b>PICKUP TRUCK</b>			
Ford F-150 Lightning	230–320	Nationwide	16
GMC Hummer	351	Nationwide	16
Rivian R1T	314	Nationwide	16
<b>SPORTS CAR</b>			
Porsche Taycan	200–225	Nationwide	16
<b>ULTRA-LUXURY/LIMITED EDITION</b>			
Lucid Air Dream	451–520	Nationwide	17
Porsche Taycan Turbo and Turbo Cross Turismo	212 and 204	Nationwide	17

## PLUG-IN HYBRID

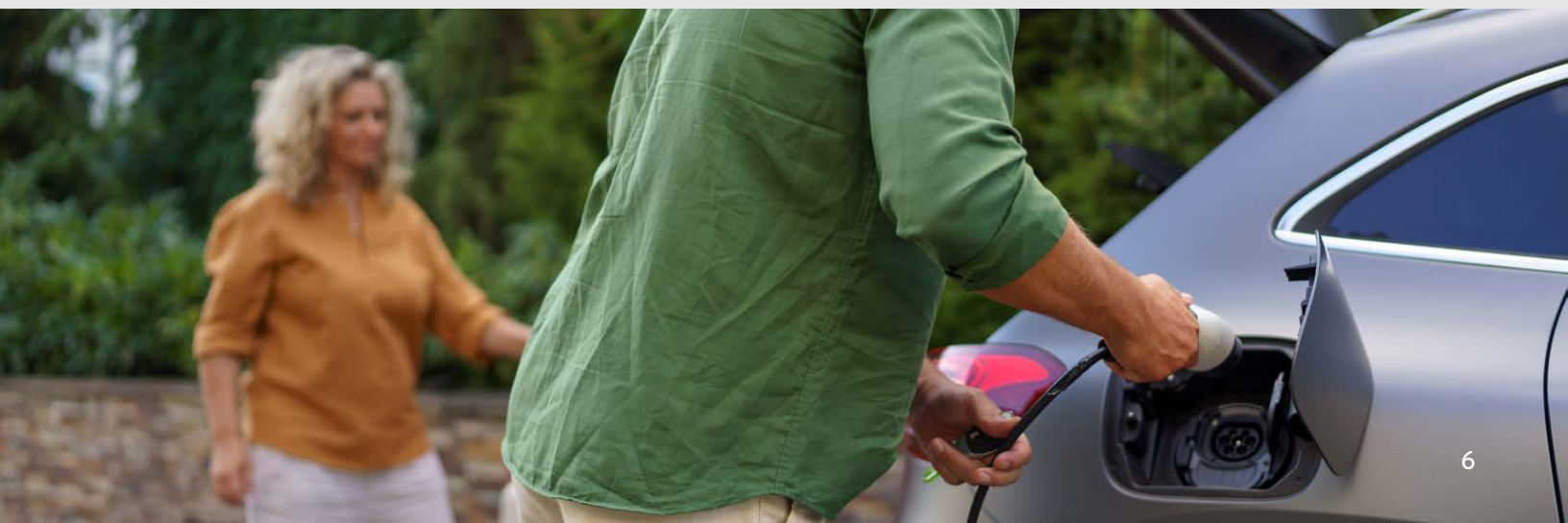
MODEL NAME	RANGE (MILES)	WHERE	PAGE
<b>SUV/CROSSOVER</b>			
Audi Q5 TFSI e	23/390	Nationwide	18
BMW X5 xDrive45e	31/400	Nationwide	18
Hyundai Santa Fe Plug-in Hybrid	31/440	Select Markets	19
Hyundai Tucson Plug-in Hybrid	33/420	Select Markets	19
Jeep Grand Cherokee 4xe	26/470	Nationwide	19
Jeep Wrangler 4xe	22/370	Nationwide	19
Kia Sorento Plug-in Hybrid	32/460	Nationwide	20
Land Rover Range Rover PHEV	19/480	Nationwide	20
Land Rover Range Rover Sport PHEV	19/480	Nationwide	20
Lexus NX 450h+	37/550	Select Markets	20
Lincoln Aviator Grand Touring	21/460	Select Markets	21
Lincoln Corsair Grand Touring	28/430	Select Markets	21
Mini Cooper SE Countryman All4	18/300	Nationwide	21
Mitsubishi Outlander PHEV	24/320	Nationwide	21
Porsche Cayenne E-Hybrid and E-Hybrid Coupe	17/430	Nationwide	22
Subaru Crosstrek Hybrid	17/480	Select Markets	22
Toyota RAV4 Prime	42/600	Nationwide	22
Volvo XC60 Recharge Plug-in Hybrid	36/560	Nationwide	22
Volvo XC90 Recharge Plug-in Hybrid	36/530	Nationwide	23



# AVAILABLE NOW

## PLUG-IN HYBRID

MODEL NAME	RANGE (MILES)	WHERE	PAGE
<b>COMPACT/HATCHBACK</b>			
Ford Escape Plug-in Hybrid	37/530	Nationwide	23
Kia Niro Plug-in Hybrid	26/560	Select Markets	23
Toyota Prius Prime	25/640	Nationwide	23
<b>SEDAN</b>			
Audi A7 TFSI e	26/410	Nationwide	24
BMW 330e and 330e xDrive	23/320 and 20/290	Nationwide	24
BMW 530e and 530e xDrive	21/350 and 19/330	Nationwide	24
BMW 745e xDrive	17/290	Nationwide	24
Porsche Panamera 4 E-Hybrid	19/480	Nationwide	25
Volvo S60 Recharge Plug-in Hybrid	22/510	Nationwide	25
Volvo S90 Recharge Plug-in Hybrid	21/490	Nationwide	25
<b>MINIVAN/WAGON/VAN</b>			
Chrysler Pacifica Hybrid	32/520	Nationwide	25
Porsche Panamera 4 E-Hybrid Sport Turismo	19/480	Nationwide	26
Volvo V60 Recharge Plug-in Hybrid	22/510	Nationwide	26
<b>ULTRA-LUXURY/LIMITED EDITION</b>			
Bentley Flying Spur	21/430	Nationwide	26
Ferrari SF90 Stradale Coupe	9/330	Nationwide	26
Polestar 1	52/470	Nationwide	27
Porsche Cayenne Turbo S E-Hybrid and Turbo S E-Hybrid Coupe	15/370	Nationwide	27
Porsche Panamera Turbo S E-Hybrid and Turbo S E-Hybrid Sport Turismo	17/430	Nationwide	27





# BATTERY-ELECTRIC CARS AVAILABLE NOW

- Battery-electric cars available as of August 2022; discontinued models or older model years may still be available, and some 2023 model years are already available.
- Range sources: [www.fueleconomy.gov](http://www.fueleconomy.gov) and automaker specifications.
- Range per hour of charging assumes home or workplace Level 2 (240V) charging.
- Fast-charging times are provided by automakers or calculated from automaker statements. These rates vary due to many factors, including battery charge level and ambient temperature.
- Starting manufacturer suggested retail price (MSRP) is retrieved from automaker websites and may vary.
- Models that offer different configurations and battery sizes may show multiple numbers for driving range, charging time, and starting MSRP.
- Vehicles are available nationwide unless designated “Select Markets” in their individual listing.
- Despite industry classifications of five-door vehicles as crossovers or compact SUVs, this guide categorizes them as hatchbacks unless they are offered with all-wheel drive.



## SUV/CROSSOVER

### 2022 Audi e-tron

Battery-electric SUV/Crossover

EPA electric range: 222 miles

Range/hour of charging: 22 miles

Fast charging: 160 miles in 30 minutes

Starting MSRP: \$65,900



### 2022 Audi e-tron Sportback

Battery-electric SUV/Crossover

EPA electric range: 218 miles

Range/hour of charging: 22 miles

Fast charging: 160 miles in 30 minutes

Starting MSRP: \$69,100



# BATTERY-ELECTRIC CARS AVAILABLE NOW

## SUV/CROSSOVER

### 2022 Audi Q4 e-tron quattro

 Battery-electric  SUV/Crossover

EPA electric range: 241 miles

Range/hour of charging: 27 miles

Fast charging: 80 miles in 10 minutes

Starting MSRP: \$53,300



### 2022 Audi Q4 Sportback e-tron quattro

 Battery-electric  SUV/Crossover

EPA electric range: 241 miles

Range/hour of charging: 27 miles

Fast charging: 80 miles in 10 minutes

Starting MSRP: \$56,300



### 2023 BMW iX

 Battery-electric  SUV/Crossover

EPA electric range: 274–324 miles

Range/hour of charging: 23–27 miles

Fast charging: 90 miles in 10 minutes

Starting MSRP: \$84,100–\$108,900



### 2022 Ford Mustang Mach-E AWD

 Battery-electric  SUV/Crossover

EPA electric range: 224–277 miles

Range/hour of charging: 25–28 miles

Fast charging: 168–216 miles in 45 minutes

Starting MSRP: \$46,595–\$49,200

Select Markets





# BATTERY-ELECTRIC CARS AVAILABLE NOW

## SUV/CROSSOVER

### 2023 Genesis Electrified G80

 Battery-electric  SUV/Crossover

EPA electric range: 323 miles

Range/hour of charging: 47 miles

Fast charging: 226 miles in 22 minutes

Starting MSRP: \$55,550

Select Markets



### 2022 Hyundai Ioniq 5

 Battery-electric  SUV/Crossover

EPA electric range: 220–303 miles

Range/hour of charging: 30–36 miles

Fast charging: 68 miles in 5 minutes

Starting MSRP: \$39,700–\$43,650

Select Markets



### 2022 Jaguar I-Pace

 Battery-electric  SUV/Crossover

EPA electric range: 234 miles

Range/hour of charging: 18 miles

Fast charging: 187 miles in 85 minutes

Starting MSRP: \$69,850



### 2022 Kia EV6

 Battery-electric  SUV/Crossover

EPA electric range: 232–310 miles

Range/hour of charging: 33–37 miles

Fast charging: 217 miles in 18 minutes

Starting MSRP: \$40,900–\$50,900



# BATTERY-ELECTRIC CARS AVAILABLE NOW

## SUV/CROSSOVER

### 2022 Rivian R1S

 Battery-electric  SUV/Crossover

EPA electric range: 316 miles

Range/hour of charging: 24 miles

Fast charging: 140 miles in 20 minutes

Starting MSRP: \$72,500



### 2022 Tesla Model X

 Battery-electric  SUV/Crossover

EPA electric range: 340–360 miles

Range/hour of charging: 23–25 miles

Fast charging: Up to 175 miles in 15 minutes

Starting MSRP: \$89,990–\$119,990



### 2022 Tesla Model Y

 Battery-electric  SUV/Crossover

EPA electric range: 303–326 miles

Range/hour of charging: 45 miles

Fast charging: Up to 162 miles in 15 minutes

Starting MSRP: \$52,990–\$60,990



### 2022 Volkswagen ID.4

 Battery-electric  SUV/Crossover

EPA electric range: 245–275

Range/hour of charging: 33 miles

Fast charging: 210 miles in 38 minutes

Starting MSRP: \$40,760





# BATTERY-ELECTRIC CARS AVAILABLE NOW

## SUV/CROSSOVER

### 2023 Volvo C40 Recharge

Battery-electric SUV/Crossover

EPA electric range: 226

Range/hour of charging: 28 miles

Fast charging: 158 miles in 40 minutes

Starting MSRP: \$58,750



Photo courtesy Volvo

### 2022 Volvo XC40 Recharge

Battery-electric SUV/Crossover

EPA electric range: 208

Range/hour of charging: 26 miles

Fast charging: 146 miles in 37 minutes

Starting MSRP: \$53,990



Photo courtesy Volvo



# BATTERY-ELECTRIC CARS AVAILABLE NOW

## COMPACT/HATCHBACK

### 2022 Chevrolet Bolt EUV

 Battery-electric  Compact/Hatchback

EPA electric range: 247 miles

Range/hour of charging: 34 miles

Fast charging: 95 miles in 30 minutes

Starting MSRP: \$34,495



### 2022 Chevrolet Bolt EV

 Battery-electric  Compact/Hatchback

EPA electric range: 259 miles

Range/hour of charging: 35 miles

Fast charging: 100 miles in 30 minutes

Starting MSRP: \$32,495



### 2022 Hyundai Kona Electric

 Battery-electric  Compact/Hatchback

EPA electric range: 258 miles

Range/hour of charging: 27 miles

Fast charging: 200 miles in 54 minutes

Starting MSRP: \$34,000

Select Markets



### 2022 Kia Niro EV

 Battery-electric  Compact/Hatchback

EPA electric range: 239 miles

Range/hour of charging: 25 miles

Fast charging: 191 miles in 75 minutes

Starting MSRP: \$39,090

Select Markets





# BATTERY-ELECTRIC CARS AVAILABLE NOW

## COMPACT/HATCHBACK

### 2022 Mazda MX-30

Battery-electric Compact/Hatchback

EPA electric range: 100 miles

Range/hour of charging: 19 miles

Fast charging: 60 miles in 36 minutes

Starting MSRP: \$33,470

Select Markets



### 2022 Mini Cooper SE

Battery-electric Compact/Hatchback

EPA electric range: 114 miles

Range/hour of charging: 29 miles

Fast charging: 91 miles in 35 minutes

Starting MSRP: \$29,900



### 2022 Nissan Leaf

Battery-electric Compact/Hatchback

EPA electric range: 149–226 miles

Range/hour of charging: 19 miles

Fast charging: 120–180 miles in 40–60 minutes

Starting MSRP: \$31,670–\$32,400



# BATTERY-ELECTRIC CARS AVAILABLE NOW

## SEDAN

### 2022 Audi e-tron GT

 Battery-electric  Sedan

EPA electric range: 232–238 miles

Range/hour of charging: 23–24 miles

Fast charging: 120–180 miles in 10–22 minutes

Starting MSRP: \$102,400–\$142,400



### 2022 BMW i4

 Battery-electric  Sedan

EPA electric range: 227–282 miles

Range/hour of charging: 23–28 miles

Fast charging: 97–110 miles in 10 minutes

Starting MSRP: \$55,400–\$65,900



### 2022 Mercedes-Benz EQS

 Battery-electric  Sedan

EPA electric range: 350 miles

Range/hour of charging: 28 miles

Fast charging: 186 miles in 15 minutes

Starting MSRP: \$102,310



### 2022 Polestar 2

 Battery-electric  Sedan

EPA electric range: 249–260 miles

Range/hour of charging: 29 miles

Fast charging: 186 miles in 40 minutes

Starting MSRP: \$47,200–\$49,900





# BATTERY-ELECTRIC CARS AVAILABLE NOW

## SEDAN

### 2022 Tesla Model 3

Battery-electric Sedan

EPA electric range: 263–353 miles

Range/hour of charging: 33 miles

Fast charging: Up to 175 miles in 15 minutes

Starting MSRP: \$39,990–\$48,990



### 2022 Tesla Model S

Battery-electric Sedan

EPA electric range: 390–520 miles

Range/hour of charging: 27 miles

Fast charging: Up to 200 miles in 15 minutes

Starting MSRP: \$79,990–\$149,990



## MINIVAN/WAGON/VAN

### 2022 Porsche Taycan 4 Cross Turismo

Battery-electric Minivan/Wagon/Van

EPA electric range: 215 miles

Range/hour of charging: 21 miles

Fast charging: 161 miles in 22 minutes

Starting MSRP: \$90,900



# BATTERY-ELECTRIC CARS AVAILABLE NOW

## PICKUP TRUCK

### 2022 Ford F-150 Lightning

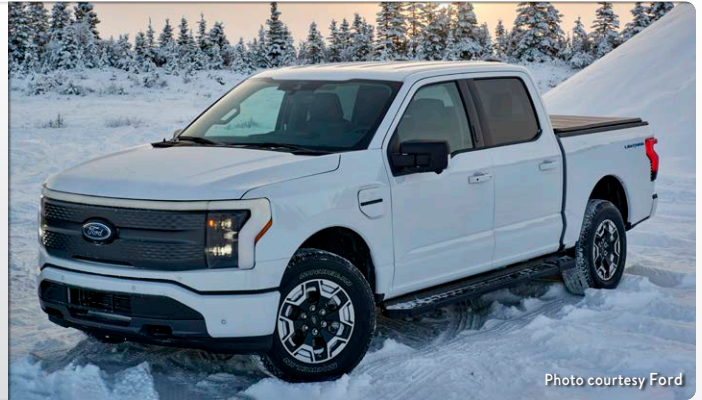
Battery-electric Pickup Truck

EPA electric range: 230–320 miles

Range/hour of charging: 16–17 miles

Fast charging: 50–54 miles in 10 minutes

Starting MSRP: \$52,974–\$62,974



### 2022 GMC Hummer

Battery-electric Pickup Truck

EPA electric range: 351 miles

Range/hour of charging: 16 miles

Fast charging: 100 miles in 10 minutes

Starting MSRP: \$99,995



### 2022 Rivian R1T

Battery-electric Pickup Truck

EPA electric range: 314 miles

Range/hour of charging: 24 miles

Fast charging: 140 miles in 20 minutes

Starting MSRP: \$67,500



## SPORTS CAR

### 2022 Porsche Taycan

Battery-electric Sports Car

EPA electric range: 200–225 miles

Range/hour of charging: 21 miles

Fast charging: 150 miles in 22 minutes

Starting MSRP: \$79,900–\$85,680





# BATTERY-ELECTRIC CARS AVAILABLE NOW

## ULTRA-LUXURY/LIMITED EDITION

### 2022 Lucid Air Dream

 Battery-electric  Ultra-luxury/Limited Edition

EPA electric range: 451–520 miles

Range/hour of charging: 35–40 miles

Fast charging: 300 miles in 20 minutes

Starting MSRP: \$169,000



Photo courtesy Lucid

### 2022 Porsche Taycan Turbo and Turbo Cross-Turismo

 Battery-electric  Ultra-luxury/Limited Edition

EPA electric range: 204 and 212 miles

Range/hour of charging: 21 miles

Fast charging: 153–160 miles in 22 minutes

Starting MSRP: \$150,900–\$154,850

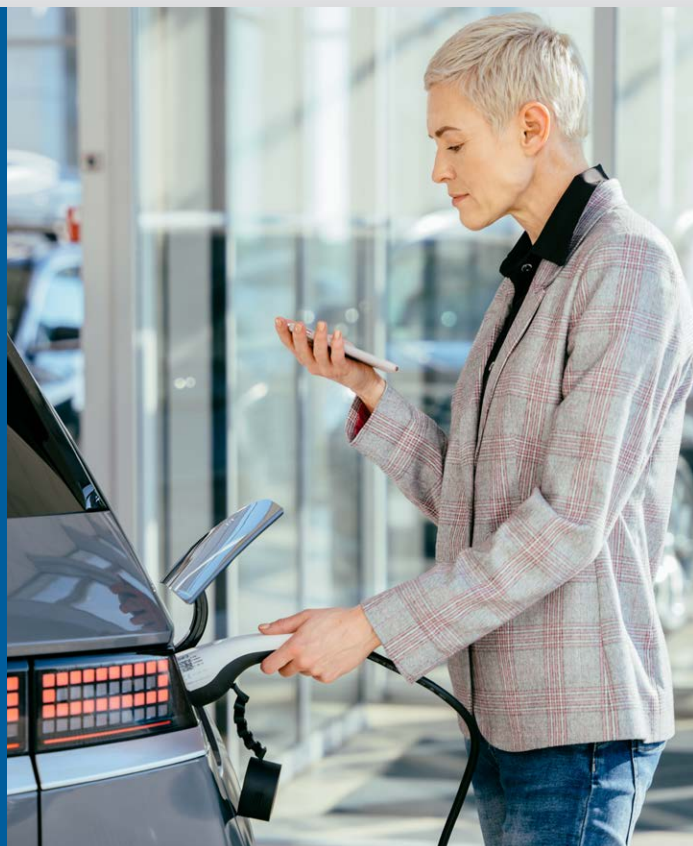


Photo courtesy Porsche



## PLUG-IN HYBRID CARS AVAILABLE NOW

- Plug-in hybrid cars available as of August 2022; discontinued models or older model years may still be available.
- Range sources: [www.fueleconomy.gov](http://www.fueleconomy.gov) and automaker specifications.
- Range per hour of charging assumes home or workplace Level 2 (240V) charging.
- Starting MSRP is retrieved from automaker websites and may vary.
- Vehicles are available nationwide unless designated “Select Markets” in their individual listing.
- Despite industry classifications of five-door vehicles as crossovers or compact SUVs, this guide categorizes them as hatchbacks unless they are offered with all-wheel drive.



### SUV/CROSSOVER

#### 2022 Audi Q5 TFSI e

Plug-in hybrid SUV/Crossover

EPA electric range: 23 miles

EPA total range (gas + electric): 390 miles

Range/hour of charging: 8 miles

Starting MSRP: \$55,400



Photo courtesy Audi

#### 2022 BMW X5 xDrive45e

Plug-in hybrid SUV/Crossover

EPA electric range: 31 miles

EPA total range (gas + electric): 400 miles

Range/hour of charging: 6 miles

Starting MSRP: \$63,700



Photo courtesy BMW



## PLUG-IN HYBRID CARS AVAILABLE NOW

### SUV/CROSSOVER

#### 2022 Hyundai Santa Fe Plug-in Hybrid

 Plug-in hybrid  SUV/Crossover

EPA electric range: 31 miles

EPA total range (gas + electric): 440

Range/hour of charging: 9 miles

Starting MSRP: \$39,500

Select Markets



#### 2022 Hyundai Tucson Plug-in Hybrid

 Plug-in hybrid  SUV/Crossover

EPA electric range: 33 miles

EPA total range (gas + electric): 420

Range/hour of charging: 19 miles

Starting MSRP: \$34,900

Select Markets



#### 2022 Jeep Grand Cherokee 4xe

 Plug-in hybrid  SUV/Crossover

EPA electric range: 26 miles

EPA total range (gas + electric): 470

Range/hour of charging: 8 miles

Starting MSRP: \$58,095



#### 2022 Jeep Wrangler 4xe

 Plug-in hybrid  SUV/Crossover

EPA electric range: 22 miles

EPA total range (gas + electric): 370

Range/hour of charging: 9 miles

Starting MSRP: \$47,995



## PLUG-IN HYBRID CARS AVAILABLE NOW

### SUV/CROSSOVER

#### 2022 Kia Sorento Plug-in Hybrid

 Plug-in hybrid  SUV/Crossover

EPA electric range: 32

EPA total range (gas + electric): 460

Range/hour of charging: 9 miles

Starting MSRP: \$45,190



#### 2022 Land Rover Range Rover PHEV

 Plug-in hybrid  SUV/Crossover

EPA electric range: 19

EPA total range (gas + electric): 480

Range/hour of charging: 6 miles

Starting MSRP: \$97,000



#### 2022 Land Rover Range Rover Sport PHEV

 Plug-in hybrid  SUV/Crossover

EPA electric range: 19

EPA total range (gas + electric): 480

Range/hour of charging: 6 miles

Starting MSRP: \$83,000



#### 2022 Lexus NX 450h+

 Plug-in hybrid  SUV/Crossover

EPA electric range: 37

EPA total range (gas + electric): 550

Range/hour of charging: 8 miles

Starting MSRP: \$56,725

Select Markets





# **PLUG-IN HYBRID CARS AVAILABLE NOW**

## **SUV/CROSSOVER**

### **2022 Lincoln Aviator Grand Touring**

**Plug-in hybrid** **SUV/Crossover**

EPA electric range: 21

EPA total range (gas + electric): 460

Range/hour of charging: 8 miles

Starting MSRP: \$69,070

Select Markets



Photo courtesy Lincoln

### **2022 Lincoln Corsair Grand Touring**

**Plug-in hybrid** **SUV/Crossover**

EPA electric range: 28

EPA total range (gas + electric): 430

Range/hour of charging: 8 miles

Starting MSRP: \$50,390

Select Markets



Photo courtesy Lincoln

### **2022 Mini Cooper SE Countryman All4**

**Plug-in hybrid** **SUV/Crossover**

EPA electric range: 18 miles

EPA total range (gas + electric): 300 miles

Range/hour of charging: 9 miles

Starting MSRP: \$41,500



Photo courtesy Mini

### **2022 Mitsubishi Outlander Plug-in Hybrid**

**Plug-in hybrid** **SUV/Crossover**

EPA electric range: 24 miles

EPA total range (gas + electric): 320 miles

Range/hour of charging: 6 miles

Fast charging: 18 miles in 25 minutes

Starting MSRP: \$36,295



Photo courtesy Mitsubishi

## PLUG-IN HYBRID CARS AVAILABLE NOW

### SUV/CROSSOVER

#### 2022 Porsche Cayenne E-Hybrid and E-Hybrid Coupe

Plug-in hybrid SUV/Crossover

EPA electric range: 17 miles

EPA total range (gas + electric): 430 miles

Range/hour of charging: 6 miles

Starting MSRP: \$81,800 and \$87,600



Photo courtesy Porsche

#### 2022 Subaru Crosstrek Hybrid

Plug-in hybrid SUV/Crossover

EPA electric range: 17 miles

EPA total range (gas + electric): 480 miles

Range/hour of charging: 8 miles

Starting MSRP: \$35,345

Select Markets



Photo courtesy Subaru

#### 2022 Toyota RAV4 Prime

Plug-in hybrid SUV/Crossover

EPA electric range: 42 miles

EPA total range (gas + electric): 600 miles

Range/hour of charging: 9 miles

Starting MSRP: \$38,100



Photo courtesy Toyota

#### 2022 Volvo XC60 Recharge Plug-in Hybrid

Plug-in hybrid SUV/Crossover

EPA electric range: 36 miles

EPA total range (gas + electric): 560 miles

Range/hour of charging: 7 miles

Starting MSRP: \$53,500



Photo courtesy Volvo



## **PLUG-IN HYBRID CARS AVAILABLE NOW**

### **SUV/CROSSOVER**

#### **2022 Volvo XC90 Recharge Plug-in Hybrid**

**Plug-in hybrid** **SUV/Crossover**

EPA electric range: 36 miles

EPA total range: 530 miles

Range/hour of charging: 7 miles

Starting MSRP: \$63,450



### **COMPACT/HATCHBACK**

#### **2022 Ford Escape Plug-in Hybrid**

**Plug-in hybrid** **Compact/Hatchback**

EPA electric range: 37 miles

EPA total range (gas + electric): 530 miles

Range/hour of charging: 11 miles

Starting MSRP: \$35,455



#### **2022 Kia Niro Plug-in Hybrid**

**Plug-in hybrid** **Compact/Hatchback**

EPA electric range: 26

EPA total range (gas + electric): 560

Range/hour of charging: 11 miles

Starting MSRP: \$29,590

Select Markets



#### **2022 Toyota Prius Prime**

**Plug-in hybrid** **Compact/Hatchback**

EPA electric range: 25 miles

EPA total range (gas + electric): 640 miles

Range/hour of charging: 12 miles

Starting MSRP: \$28,220



## PLUG-IN HYBRID CARS AVAILABLE NOW

### SEDAN

#### 2022 Audi A7 TFSI e

 Plug-in hybrid  Sedan

EPA electric range: 26 miles

EPA total range (gas + electric): 410 miles

Range/hour of charging: 9 miles

Starting MSRP: \$75,900



#### 2022 BMW 330e and 330e xDrive

 Plug-in hybrid  Sedan

EPA electric range: 23 and 20

EPA total range (gas + electric): 320 and 290

Range/hour of charging: 8 and 7 miles

Starting MSRP: \$44,950 and \$44,950



#### 2022 BMW 530e and 530e xDrive

 Plug-in hybrid  Sedan

EPA electric range: 21 and 19

EPA total range (gas + electric): 350 and 330

Range/hour of charging: 7 miles

Starting MSRP: \$55,500 and \$57,840



#### 2022 BMW 745e xDrive

 Plug-in hybrid  Sedan

EPA electric range: 17

EPA total range (gas + electric): 290

Range/hour of charging: 4 miles

Starting MSRP: \$95,900





## PLUG-IN HYBRID CARS AVAILABLE NOW

### SEDAN

#### 2022 Porsche Panamera 4 E-Hybrid

 Plug-in hybrid  Sedan

EPA electric range: 19 miles

EPA total range (gas + electric): 480 miles

Range/hour of charging: 6 miles

Starting MSRP: \$103,800



#### 2022 Volvo S60 Recharge Plug-in Hybrid

 Plug-in hybrid  Sedan

EPA electric range: 22 miles

EPA total range (gas + electric): 510 miles

Range/hour of charging: 7 miles

Starting MSRP: \$47,650



#### 2022 Volvo S90 Recharge Plug-in Hybrid

 Plug-in hybrid  Sedan

EPA electric range: 21 miles

EPA total range (gas + electric): 490 miles

Range/hour of charging: 7 miles

Starting MSRP: \$60,050



### MINIVAN/WAGON/VAN

#### 2022 Chrysler Pacifica Hybrid

 Plug-in hybrid  Minivan/Wagon/Van

EPA electric range: 32 miles

EPA total range (gas + electric): 520 miles

Range/hour of charging: 16 miles

Starting MSRP: \$45,400



# PLUG-IN HYBRID CARS AVAILABLE NOW

## MINIVAN/WAGON/VAN

### 2022 Porsche Panamera 4 E-Hybrid Sport Turismo

Plug-in hybrid
 Minivan/Wagon/Van

EPA electric range: 19 miles

EPA total range (gas + electric): 480 miles

Range/hour of charging: 6 miles

Starting MSRP: \$107,800



Photo courtesy Porsche

### 2022 Volvo V60 Recharge Plug-in Hybrid

Plug-in hybrid
 Minivan/Wagon/Van

EPA electric range: 22 miles

EPA total range (gas + electric): 510 miles

Range/hour of charging: 7 miles

Starting MSRP: \$67,300



Photo courtesy Volvo

## ULTRA-LUXURY/LIMITED EDITION

### 2022 Bentley Flying Spur

Plug-in hybrid
 Ultra-luxury/Limited Edition

EPA electric range: 21

EPA total range (gas + electric): 430

Range/hour of charging: 7 miles

Starting MSRP: \$210,600



Photo courtesy Bentley

### 2022 Ferrari SF90 Stradale Coupe

Plug-in hybrid
 Ultra-luxury/Limited Edition

EPA electric range: 9 miles

EPA total range (gas + electric): 330 miles

Range/hour of charging: 4 miles

Starting MSRP: \$511,295



Photo courtesy Ferrari



# **PLUG-IN HYBRID CARS AVAILABLE NOW**

## **ULTRA-LUXURY/LIMITED EDITION**

### **2022 Polestar 1**

**Plug-in hybrid** **Ultra-luxury/Limited Edition**

EPA electric range: 52 miles

EPA total range (gas + electric): 470 miles

Range/hour of charging: 6 miles

Starting MSRP: \$155,000



Photo courtesy Polestar

### **2022 Porsche Cayenne Turbo S E-Hybrid and Turbo S E-Hybrid Coupe**

**Plug-in hybrid** **Ultra-luxury/Limited Edition**

EPA electric range: 15 miles

EPA total range (gas + electric): 370 miles

Range/hour of charging: 5 miles

Starting MSRP: \$163,200 and \$165,300



Photo courtesy Porsche

### **2022 Porsche Panamera Turbo S E-Hybrid and Turbo S E-Hybrid Sport Turismo**

**Plug-in hybrid** **Ultra-luxury/Limited Edition**

EPA electric range: 17 miles

EPA total range (gas + electric): 430 miles

Range/hour of charging: 6 miles

Starting MSRP: \$196,400–\$200,400



Photo courtesy Porsche



## About EPRI

Founded in 1972, EPRI is the world's preeminent independent, non-profit energy research and development organization, with offices around the world. EPRI's trusted experts collaborate with more than 450 companies in 45 countries, driving innovation to ensure the public has clean, safe, reliable, affordable, and equitable access to electricity across the globe. Together, we are shaping the future of energy.

3002024153

## EPRI

3420 Hillview Avenue, Palo Alto, California 94304-1338 • USA  
800.313.3774 • 650.855.2121 • [askepri@epri.com](mailto:askepri@epri.com) • [www.epri.com](http://www.epri.com)

© 2022 Electric Power Research Institute (EPRI), Inc. All rights reserved. Electric Power Research Institute, EPRI, and TOGETHER...SHAPING THE FUTURE OF ENERGY are registered marks of the Electric Power Research Institute, Inc. in the U.S. and worldwide