

“In cooperation with our citizens, we improve the quality of life for individuals, families and communities by fostering a healthy economy and environment.”

“Looking forward with purpose.”

COMMISSIONER BRIEFING

**NOVEMBER 19, 2024
NATIONAL GRID RENEWABLES
SUMMIT LAKE SOLAR PROJECT
TOM KARAS, SENIOR PROJECT DEVELOPER**

Item:

Tom Karas from National Grid Renewables wishes to offer a renewable energy presentation to the County Board of Commissioners during this meeting.

Discussion:

A solar project is proposed within Summit Lake Township of Nobles County. Mr. Tom Karas will introduce the project through a Power Point Presentation. The presentation is attached. Commissioners are encouraged to prepare and offer questions relating to this proposed project. This topic is believed to be an information-only item.

Options:

- Participate and ask questions relating to this renewable energy presentation and the proposed project.
- Do not participate or ask questions relating to the project.

Recommendation:

Administration recommends the Commissioners identify the parameters of the project and prepare questions relating to: overall economic impacts to the change of land use, decommission practices, and other aspects which offer benefits and costs to Nobles County.

SUMMIT LAKE
SOLAR

PROJECT OVERVIEW

The Summit Lake Solar Project is a 200 megawatt (MW) solar development located in Nobles County, Minnesota. Summit Lake will span approximately 1,600 acres and will be connected to the Nobles 345kV Substation. The project is anticipated to positively impact the environment as well as the local economy by producing tax revenue, jobs, and contributions through an education fund. Summit Lake is estimated to avoid approximately 297,900 metric tons of carbon dioxide emissions annually during operations - the equivalent of taking an estimated 70,900 cars off the road for a year.

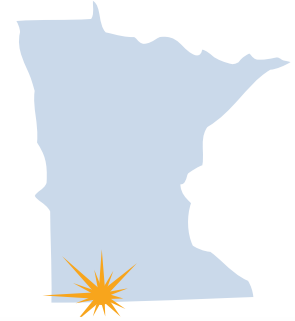
PROJECT DETAILS

Summit Lake Solar will provide energy and capacity for the transmission network and is expected to connect to the electric grid at the Nobles 345kV Substation. Summit Lake Solar will provide a cost effective alternative to fossil fuels. Summit Lake Solar's project footprint will consist of approximately 1,600 acres signed under agreement and has ideal conditions for solar energy generation.



ABOUT NATIONAL GRID RENEWABLES

National Grid Renewables develops and operates large-scale renewable energy assets across the United States, including solar, wind, and energy storage. As a farmer-founded and community-focused business, National Grid Renewables repowers America's electricity grid by reigniting local economies and reinvesting in a sustainable, clean energy future. National Grid Renewables supports National Grid's vision of being at the heart of a clean, fair, and affordable energy future for all.



PROJECT SPECIFICATIONS

Operational Capacity: 200 MW

Location: Nobles, MN

Direct Economic Impact:
approximately \$27million over 20
years of operation

Targeted Construction Timeline:
2026 - 2027

Targeted COD: 2027

**Carbon Dioxide Emissions
Avoided:** ~297,900 metric tons
annually*

*Calculations based on the EPA Greenhouse Gas Equivalencies calculator and current Minnesota tax for solar facilities. Subject to change.



FUND OVERVIEW

The Summit Lake Solar Education Fund's purpose will be to engage in, assist, and contribute money to charitable and/or community activities and opportunities within the communities of Minnesota connected to the Summit Lake Solar Project. The Summit Lake Solar Project is located in Nobles County and includes the town of Summit Lake.

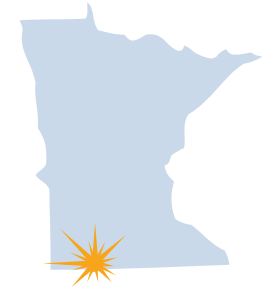
After the project reaches Commercial Operation, the Education Fund will be initiated and will receive donations annually for an estimated 20 years to use for charitable and/or community projects and opportunities. The gifts donated through the Education Fund are above and beyond any tax revenue delivered by the project. The goal of the Education Fund will be to provide direct benefit and value to the entire community touched by the Summit Lake Solar Project.

National Grid Renewables will select an established state, regional, or national Community Foundation or similar 501(c)3 organization to manage and provide oversight for the donations gifted to the Education Fund. Community members, officials, and/or landowners within the project will be given the opportunity to assist in the grant application and funds dispersal process to ensure local insight and needs are considered.



ABOUT NATIONAL GRID RENEWABLES

National Grid Renewables develops and operates large-scale renewable energy assets across the United States, including solar, wind, and energy storage. As a farmer-founded and community-focused business, National Grid Renewables repowers America's electricity grid by reigniting local economies and reinvesting in a sustainable, clean energy future. National Grid Renewables supports National Grid's vision of being at the heart of a clean, fair, and affordable energy future for all.



PROJECT SPECIFICATIONS

The Summit Lake Solar Project is a 200 megawatt facility located in Nobles County, Minnesota.

It will generate enough clean, homegrown energy to provide the equivalent electrical usage of an estimated 58,800 homes each year and offset approximately 5.9 million metric tons of carbon dioxide throughout the life of the project.*

The Summit Lake Solar Project is located in the Southwest region of Minnesota.

*These figures are based on calculations from the US Environmental Protection Agency (EPA) Gas Equivalencies Calculator.

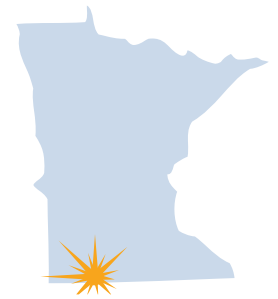


for 200 MW Solar Project

Producing home-grown, clean, renewable energy in Minnesota.

Project Overview

The Summit Lake Solar Project is a 200 megawatt (MW) solar development located in Nobles County, Minnesota. Summit Lake will span approximately 1,600 acres and will be connected to the electric grid via the Nobles 345kV Substation. The project is anticipated to positively impact the local economy by producing significant tax revenue, project construction and operation jobs, and annual contributions through an education fund. Summit Lake Solar is estimated to avoid approximately 297,900 metric tons of carbon dioxide emissions annually during operation - the equivalent of taking an estimated 70,900 cars off the road every year.



During Construction and Operation ~\$27 Million Direct Impact Over 20 Years

~\$1 million
Over 20 Years
(~\$50,000 annually)

**Charitable
Fund**

~\$10 million
Over 20 Years*
(~\$500,600 annually)

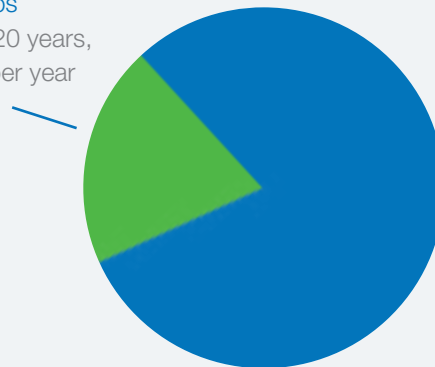
Tax Revenue distribution projections:

250
Construction
and related
Service Jobs



4
Full-time Jobs

Townships
\$2 million over 20 years,
or \$100,100 per year



Local County
\$8 million over 20 years,
or \$400,500 per year

*Calculations based on EPA Greenhouse Gas Equivalencies calculator and current Minnesota tax for solar facilities. Subject to change.

About National Grid Renewables

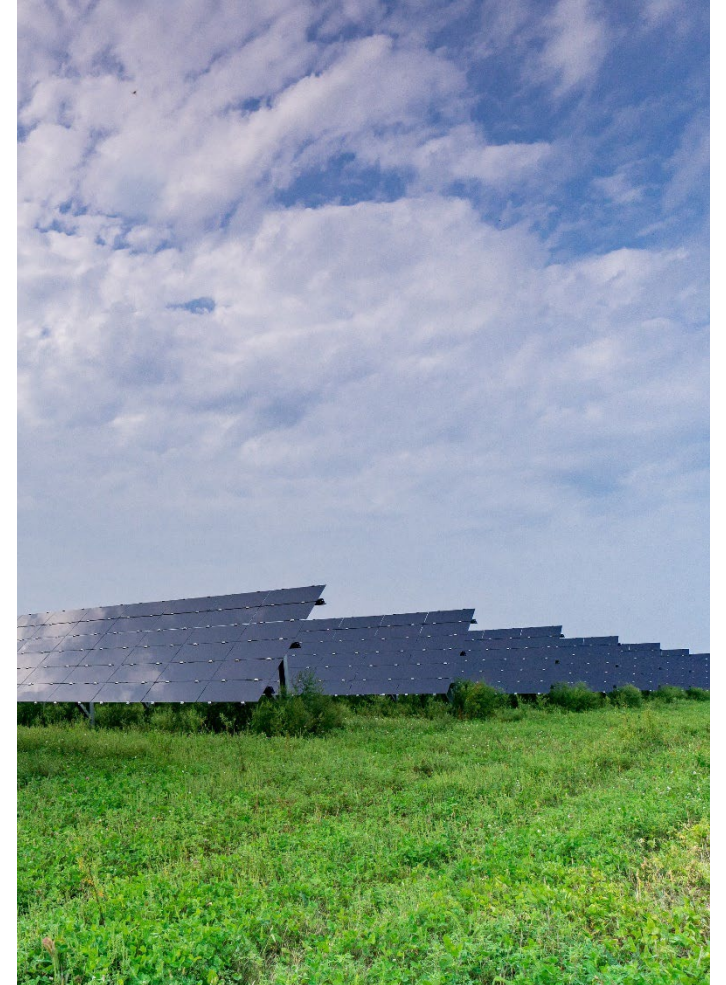
National Grid Renewables develops and operates large-scale renewable energy assets across the United States, including solar, wind, and energy storage. As a farmer-founded and community-focused business, National Grid Renewables repowers America's electricity grid by reigniting local economies and reinvesting in a sustainable, clean energy future. National Grid Renewables supports National Grid's vision of being at the heart of a clean, fair, and affordable energy future for all.



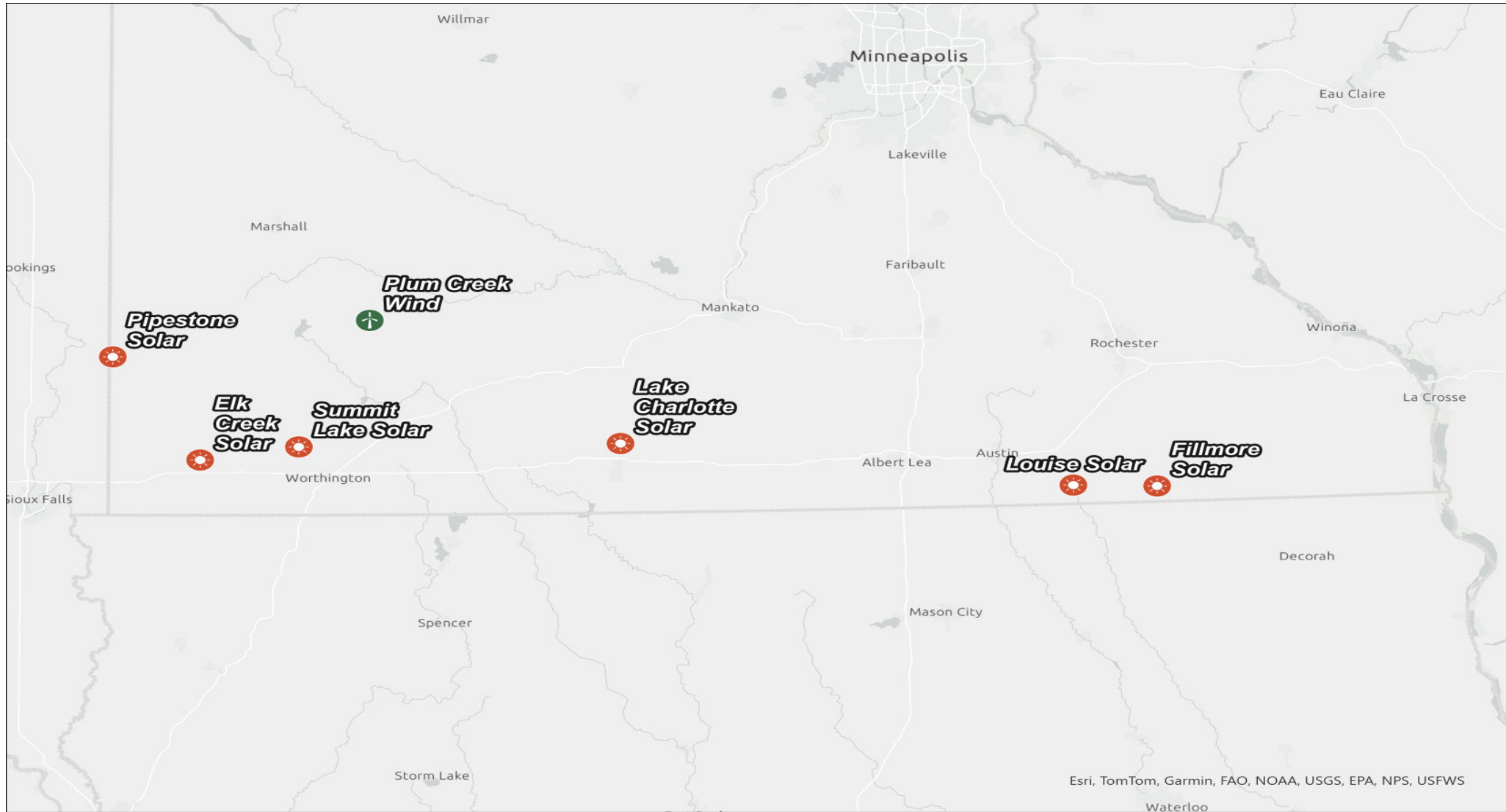
Nobles County Commission
NOVEMBER 2024

About National Grid Renewables

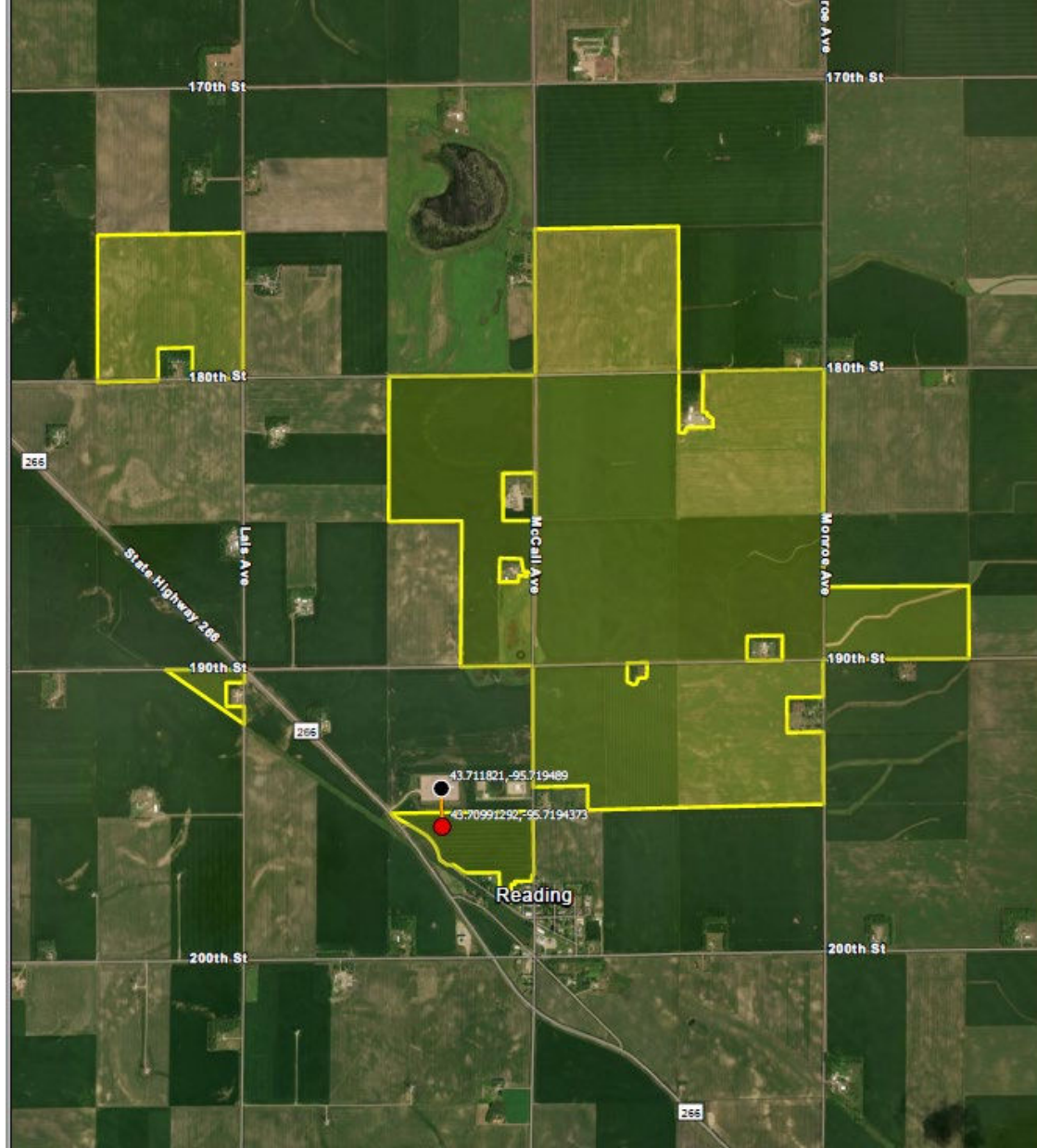
- **Expertise as Top U.S. Renewable Energy Company**
 - National Grid Renewables is a leading North American independent developer and operator of utility-scale renewable energy and battery storage projects
 - National Grid Renewables includes the renewable energy development company formerly known as Geronimo Energy, whose team has successfully developed over 2,800 megawatts (MW) of wind and solar projects that are currently in operation or under construction
 - We are experts in renewable energy project development, construction and operations
 - The robust National Grid Renewables pipeline stretches across the United States, including projects in advanced development phases



Current Projects under development in RMEB territory



Esri, TomTom, Garmin, FAO, NOAA, USGS, EPA, NPS, USFWS



Summit Lake Solar

Nobles County, MN

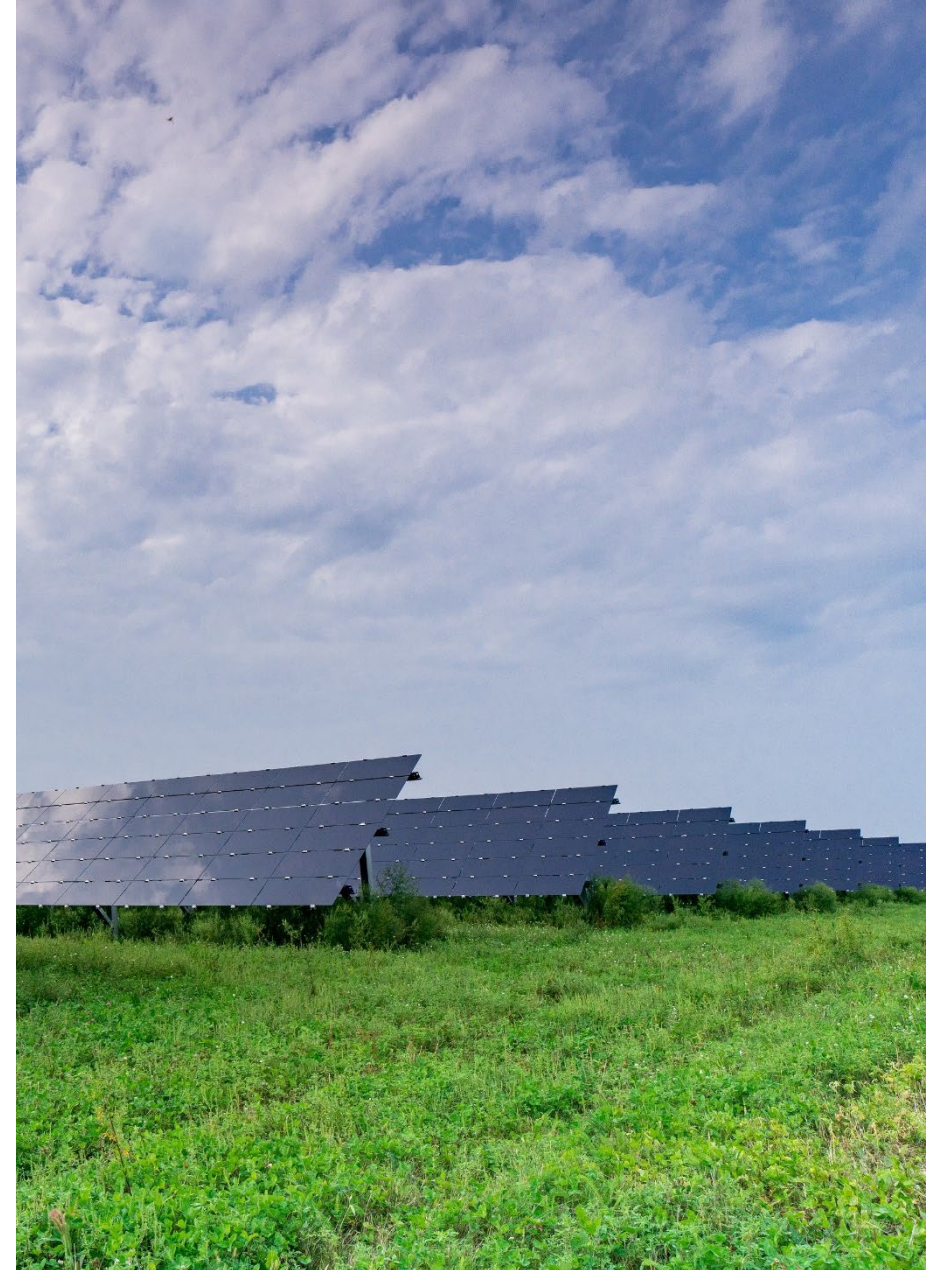


- Project Substation
- POI
- Gen-Tie
- Project Area



SUMMIT LAKE SOLAR

- Project Facts
 - Nobles County, NE of Reading
 - 200MW with BESS
 - 1,800 acres
- Economic Impact
 - \$20,000,000 during construction and operations over 20 years
 - \$500,600+ direct tax revenue annually
 - 250 construction jobs and 4 permanent positions
 - \$50k annual charitable fund



During Construction and Operation ~\$41.2 Million Direct Impact Over 20 Years

~\$500,000
Over 20 Years
(~\$25,000 annually)

**Charitable
Fund**

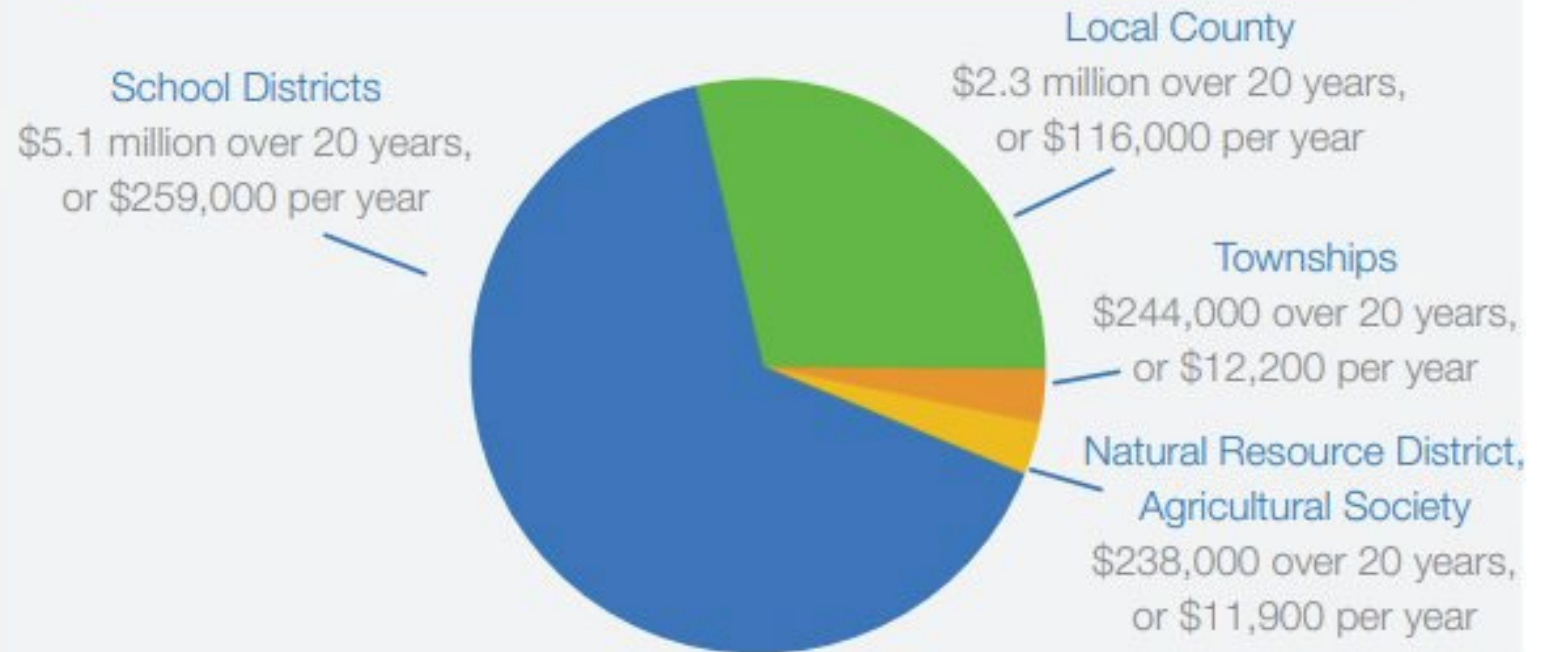
150
Construction
and related
Service Jobs

1-2
Full-time Jobs



~\$7.9 million
Over 20 Years*
(~\$399,000 annually)

Tax Revenue distribution projections:





Tom Karas Senior Project Developer

Phone: 763-333-5200

Email: tkaras@nationalgridrenewables.com

Thank You